

Medication

Boarding Students: Medication needs are managed by the Medical Centre or personally if students choose to self-medicate and have a suitable risk assessment in place.

If you need to carry any emergency medication e.g. an inhaler or adrenaline pen, please inform the Medical Centre. The nurses will assess each individual student and complete a self-medication consent form. The Medical Centre team will also liaise with Parents/Guardian to produce a health care plan where needed. This will then be shared with the rest of the College staff to ensure you are kept safe and well throughout your time in the College.

Please inform House staff and the Medical Centre team if you bring any medication from home. If it has not been prescribed (e.g. vitamins) Parents/Guardians are required to complete a Parental request form for each medication.

Repeat medications are ordered by boarding staff using the Wyndham Medical Partnership online service. Sixth form students are expected to request repeat medications using the online service. House staff can help if needed. The link is: <https://forms.office.com/e/NdJbxuWR9W>

All students on repeat medications need to return to school from end of term holidays with a minimum of 2 weeks supply of medication.

During school holidays Parents and Guardians can continue to order repeat medication from Wyndham Medical practice using the online service.

Day Students: Medication is not given to day students unless a Parental request for treatment form has previously been filled in and signed and the right medication brought into the Medical Centre.

Medicines for day students should only be brought into the College when essential.



Viruses/ Infections

All day students with either a suspected or confirmed contagious infection including vomiting or diarrhoea may not attend a school until 48 hours after the last occurrence (48 hours symptom free).

Boarding students with suspected contagious infection will be sent for assessment in the Medical Centre. A school nurse will assess the student. If their assessment indicates a suspected or confirmed contagious infection the student can be cared for in the College Medical Centre. However, as they must spend a minimum of 48 hours in the Medical Centre isolation room they may choose to go home.

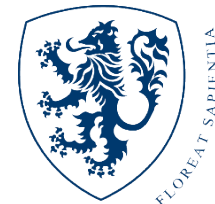
To minimise the spread of infection visitors are generally not allowed at the Medical Centre. However, feel free to bring down any items that your child/friend needs, and we will pass them on.

Medical Appointments

Boarding students may be referred for medical appointments off-site. It is both school and hospital policy that for first appointments a Parent or Guardian should transport and attend the appointment with the student.

For follow-up appointments (with the agreement of the hospital), a medical assistant can go with the student. This will be in a pre-booked taxi paid for by the Parents/Guardians.

The Medical Centre is unable to arrange appointments for private health care, ophthalmic review, dental review or physiotherapy. These along with transport to/from the appointment should be arranged through Parents/Guardians.



WYNDHAM COLLEGE MEDICAL CENTRE

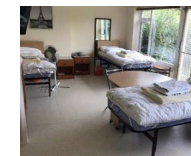


WELCOME TO THE MEDICAL CENTRE TEAM

Lead Nurse: Laura May

School Nurses: Sarah Cunningham,
Kirsten Mead, Lexi Barker, Ali Crowter
and Jess Freeman

Med Centre Assistants: Karen Stinton,
Stella Kennard, Lana Hannah



Contact Information:

T: 01953 609027

E: medcentre@wymcol.org

About the Medical Centre

Wymondham College Medical Centre is a dedicated ten-bed, purpose-built medical facility located within the staff residential area of the College campus. The Medical Centre provides 24-hour cover, seven days a week, during term time by a highly professional and dedicated health care team of five qualified nurses supported by experienced Medical Centre Assistant cover overnight and welcoming Medical Centre assistants during the day.

The aim of the Medical Centre is to provide a clinically effective outstanding service of nursing care to students and first aid to all members of the school community. Day pupils, staff and visitors can expect emergency and immediate care.

Students boarding at Wymondham College are registered at the local Wymondham Medical Partnership, Postmill Close. College policy is for all boarding students to have a new student check with a member of the Medical Centre team during the first term to check and monitor their health and well-being whilst at school.

Doctors, Nurse Practitioners and Practice Nurses from Wymondham Medical Practice visit the Medical Centre on a regular basis each week. Appointments for this service are readily available and will be made upon consultation with the college Medical Centre team.

- Asthma clinic
- Routine immunisations
- Travel clinic for advice and immunisations
- Health promotion
- Providing time out and/or a listening ear
- Sexual health advice
- C Card point
- Infection control
- Health Care plans
- Anaphylaxis training
- Liaise with external services
- Emergency hospital transport

When and Why to attend the Medical Centre

If students feel unwell whilst in the boarding house, they should inform Matron, Head of House or House Parent. If Matron feels that medical intervention is required, they will contact the Medical Centre to make an appointment for the student.

Appointment times

We have appointments available with the school nurse before school begins. During breaktime, lunchtime and then after school.

Each main schoolhouse has a designated day where between 3.30-4.30 a school nurse will visit the boarding house to see the students. They will offer educational information, perform new student checks and see individual students during this time.

Off games slips

Off games slips should be requested before school unless the injury has occurred during the day.

This should ensure that students are not attending the Medical Centre after 8.30am except for emergencies.

During lesson time

If students start to feel unwell during a lesson, there are very few times when they will need to leave that lesson.

Students attending the Medical Centre should **NOT** do so during lessons/registration/assembly/tutor periods unless it is an emergency or urgent. They should have discussed this with a member of staff who agrees they can attend the Medical Centre. Where possible, the member of staff will notify the Medical Centre prior to sending to the Medical Centre.

These guidelines always apply to all students. Lesson time and study periods are for studying, nothing else.

Clinics in the Medical Centre

Clinics are held Monday, Tuesday and Thursday mornings, generally 8.30-10.30am.

Monday clinic: GP clinic.

Tuesday clinic: Asthma and phlebotomy clinic is held by the practice nurse.

Thursday clinic: Nurse practitioner clinic.

A school nurse is usually in all consultations.

Anyone wishing to be seen in private should inform the nurse on duty.

